

State of Wyoming Corner Record

(In compliance with the CORNER PERPETUATION AND FILING ACT, Wyoming Statutes, 1997, Section 33-29-140, et. seq., and the Rules and Regulations of the Board of Registration for Professional Engineers and Professional Land Surveyors)

Reverse side of this form may be used if more space is needed.

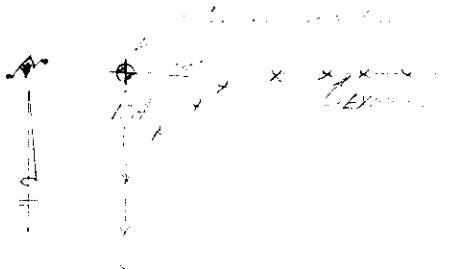
Record of original survey and citation of source of historical information (if corner is lost or obliterated). Description of corner monumentation evidence found and/or monument and accessories established to perpetuate the location of this corner. Sketch of relative location of monument, accessories, and reference points with course and distance to adjacent corner(s) (if determined in this survey). Method and rationale for reestablishment of lost or obliterated corner.

G.L.O. Record: U.S. Deputy Surveyor, Edwin James, July 22, 1870; 40.00 Chains.... Set a granite stone 16 x 10 x 7 for 1/4 section corner.

Subsequent Record: Certified Corner Recordation form filed September 10, 1986, by Larry T. Perry, indicates a No. 5 rebar with no identification.

Found: A No. 5 x 30" rebar, 8" out of the ground with a loose original marked stone SE. Original stone was 16" x 9" x 5" with a 1/4 marked on the north face.

Set: At the corner point, I remove the found No. 5 rebar and original stone and set a 2 1/2" X 30" Aluminum pipe along with the found rebar inside, 24" in the ground with a 3/4" Aluminum Cap marked as noted below. Buried the original stone as a memorial adjacent and south of the remonumented corner point.



Sketched
General Location of Corner

Aluminum Cap Markings

T14N R67W
S31
1/4 —●—
S6
T13N
1998
PLS 2927

98 DEC 11 AM 11 27

L.D. DEWITT, COUNTY CLERK
Cheyenne, WY

240319

See the back of this sheet for measurements to adjacent corner

Date of Field Work: Dec. 2, 1998 Office Reference: A.V.I. Job No. 2-1200

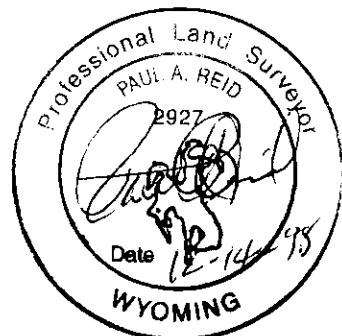
CROSS INDEX DIAGRAM

	1	2	3	4	5	6	7	8	9	10	11	12	13	14	15	16	17	18	19	20	21	22	23	24	25
A																									
B																									
C		6																							
D			5																						
E				4																					
F					3																				
G						2																			
H							1																		
I																									
J																									
K																									
L																									
M																									
N																									
O																									
P																									
Q																									
R																									
S																									
T																									
U																									
V																									
W																									
X																									
Y																									
Z																									

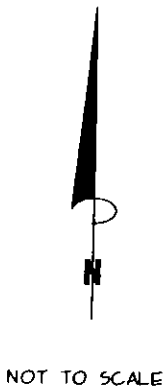
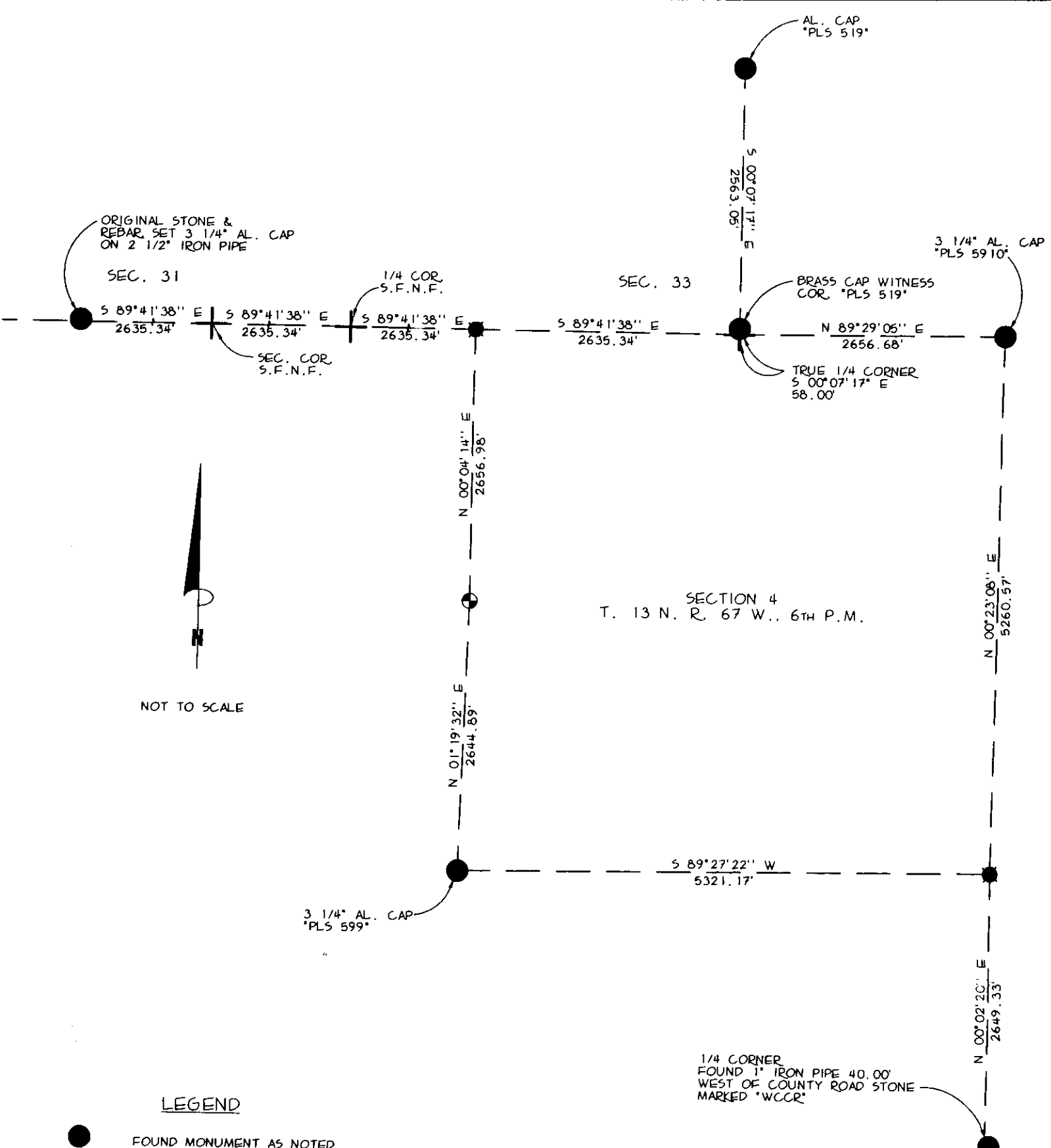
Firm/Agency, Address

Paul A. Reid, A.V.I.p.c.
2035 Westland Road
Cheyenne, WY 82001
Telephone Number:
(307)-637-6017

This corner record was prepared by me or under my direction and supervision.



Corner Name: N 1/4 Section: 6 T 13N, R 67W, 6thP.M. Cross-Index No.: A-3



LEGEND

- FOUND MONUMENT AS NOTED
- ⊕ DIMENSION POINT, NOTHING FOUND
NOTHING SET
- ⊙ SET No. 6 REBAR W/ 3 1/4" AL. CAP. *PLS 2927*
- ⊙ FOUND ORIGINAL STONE
RESET W/ 3 1/4" AL. CAP
- S.F.N.F. CORNER SEARCHED FOR
AND NOT FOUND

1/4 CORNER
FOUND 1" IRON PIPE 40.00'
WEST OF COUNTY ROAD STONE
MARKED *WCCR*

SKETCH OF SECTION 4
BOUNDARY SURVEY
SEC. 4, T. 13 N., R. 67 W., 6TH P.M.
LARAMIE COUNTY, WYOMING